



Control and monitor with:  
**AMATIS APP + DASHBOARD**



Product specifications



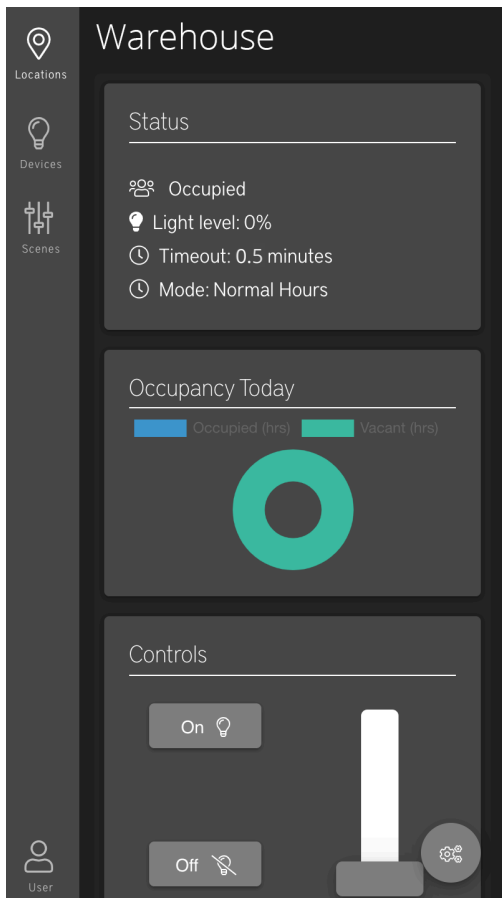
## PRODUCTS OVERVIEW

The Amatis App allows you to easily interact with your newly installed Amatis lighting controls devices and guides through the commissioning process. Commissioning a mesh network can begin after installing your devices and logging into the app. The free app is available for both Apple and Android devices, and can also be accessed through your web browser at [app.amatiscontrols.com](http://app.amatiscontrols.com).

After commissioning is complete and the system is operational, monitor energy savings and system data through the Amatis Dashboard, found through your web browser at [amatisdash.com](http://amatisdash.com).

## APP FEATURES

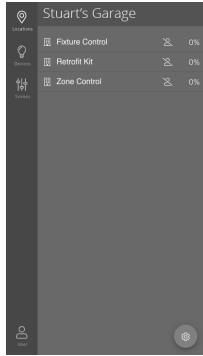
After your devices are installed, use the Amatis app to create virtual lighting control zones. When connected to your site's Amatis Border Router (AMBR) via an Internet connection, use the Amatis app to configure and maintain your sites remotely.



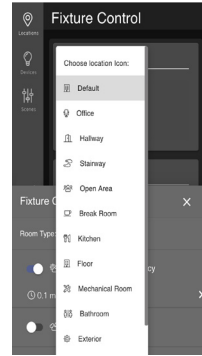
<b>APP FUNCTIONALITY</b>	Program devices in the Amatis Controls system for individual lights and light groupings
	Enables remote configuration, customization and troubleshooting, from anywhere with an Internet connection
	Create multiple controls zones per building
	Add or remove devices from control zones
	Enables app-based (manual) control of control zones
	Customize daylight harvesting settings
	Tune high- and low-end trims
	Two customizable modes for occupancy: Normal Hours and After Hours (vacancy)
	Pre-defined or default settings for various room types available
	Tech mode users can customize scenes; Installer-level users can view scenes and request creation
<b>ACCESSIBILITY</b>	Administrative users can create or edit custom schedules; Installer-level users can view schedules and request creation
	Available for both Apple and Android devices
<b>CODE COMPLIANCE</b>	Can also be accessed at <a href="http://app.amatiscontrols.com">app.amatiscontrols.com</a> from a web browser on any phone, tablet or desktop
	Empowers professional end users (contractors) with access to the commissioning process
<b>WARRANTY</b>	Amatis lighting controls meet Title 24 and ASHRAE 90.1-2016 standards
<b>WARRANTY</b>	The Amatis app is free to use

## APP FEATURES, continued

**Create locations**  
Multiple zones, or locations, can be created in the app, each with different lighting controls strategies.



**Room type settings**  
Select from a list of room types that help pre-configure your location based on most common features in each type of room. Or you can choose to stay on "Default" which does not use any predefined features.



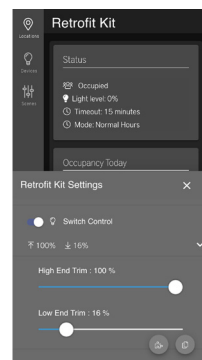
**Add and remove devices**  
Add and subtract devices from your control zones.



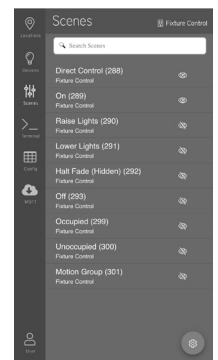
**Manual control**  
Enable Slider Control to have direct control of the lighting from the app.



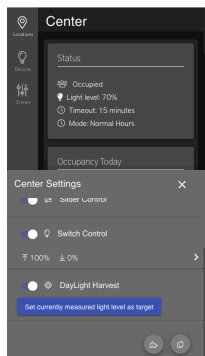
**Switch control**  
You can control your system with programmable battery-powered and wired switches, or virtually by enabling Switch Control in the app.



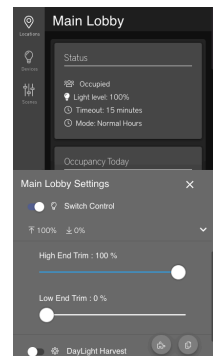
**Tech mode**  
Available to expert users, this role includes access to scene customization and more advanced device configuration.



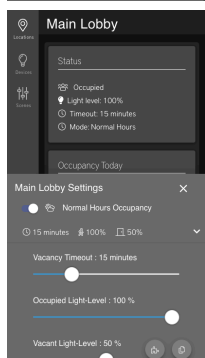
**Daylight harvesting**  
Set lights to dim when there is enough ambient light coming in through windows.



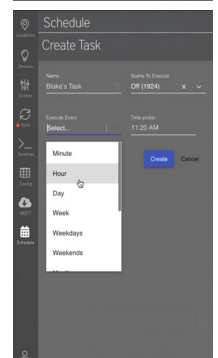
**Tuning**  
Set high- and low-end trims to define the highest and lowest levels allowed in a space, for both comfort and energy savings. The high-end trim can be set to as low as 1%.



**Normal hours occupancy**  
Choose how long the lights stay on once motion is detected.



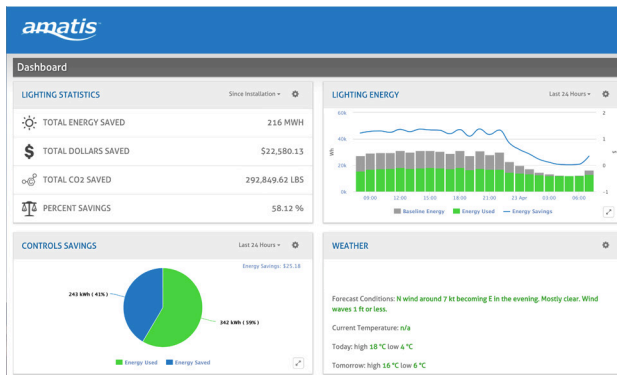
**Scheduling**  
Administrative users can create or edit custom schedules for individual days or in larger recurring frequencies, like weekly instances.



**After hours occupancy**  
Set vacancy timeout that programs lights to shut off after a set time of no vacancy in a location.

Installer-level users can view schedules created, and request these from Amatis representatives.

## DASHBOARD FEATURES



### Data collection

Monitor energy savings, occupancy rates, light levels, and temperature fluctuations. By providing baseline data prior to adding lighting controls, you can compare changes in total energy, dollars, CO2 and percent savings.



### Real-time schematics

Show occupant activity in a reflected ceiling plan format with device placement.

## TECHNICAL SPECIFICATIONS

	AMATIS APP	AMATIS DASHBOARD
Technology	Progressive web app written in React	Web app written in PHP
Mobile app	The free app is available for both Apple and Android devices	N/A
Security	AES 128-bit encryption	
Web browser	app.amatiscontrols.com	amatisdash.com
Connections required	Requires cellular or Internet connection to communicate to your site's mesh network via the AMBR.	
Alert mechanisms	Offline devices are escalated in the Amatis app in the "Errors" section. User experience software also monitors for app connectivity issues and dispatches email communication to users when needed.	Offline devices are escalated in the Amatis Dashboard in the "Errors" section. Software is used to monitor dash connectivity issues.
Software / firmware updates	Every two weeks via web server updates and app store releases.	Every two weeks via web server updates.
API	The Amatis API is a cloud-hosted, RESTful node.js written with express framework, and interfaces with all devices via operational commands. Endpoint availability is dependent on user type, and site and device availability are dependent on user's permission. <ul style="list-style-type: none"> <li>- Requires user authentication; 2-factor authentication available</li> <li>- Available to customers and developers upon request</li> </ul>	

Note: Actual performance may vary as a result of end-user environment and application. Specifications subject to change without notice.

©2019 Amatis Controls. All rights reserved. Archive 1942, Rev 2 042919

